

Pedestals SLD – Standard technical specification



.mdd

.mdd has a leading position among manufacturers of office furniture with many awards that prove quality and continuously increase demand for its products.

The realities of today's market require constant quality improvement at all levels of modern organization. This applies in particular to customer service, marketing, quality of products and also to quality of processes within the company.

Partnership relations among employees and with business partners form a base of economic growth and success of the company.

Constant investments in innovative machinery park, optimization of management systems and an expansion of production halls allow to minimize the lead times for the product of the highest quality.

More than twenty years of experience in office furniture industry come with reference from a long list of companies and institutions to show their appreciation for an efficient and comprehensive service.

.mdd is highly aware of the environment.

Being located in the forest region with lake by its side, .mdd takes the nature seriously and invests constantly in a modern and energy-efficient solutions to preserve the local life. Company puts emphasis on waste segregation and recycling. .mdd has been awarded for the exceptional care and involvement in waste disposal. All materials used are environmentally friendly and enjoy a high 95 % rate of being recycled.



General informations:

Warranty:

.mdd products – **5 years.**

Electrical components and fabric – **2 years.**

Certificate - MFC:



Assembly:

the product comes pre-assembled

Packing:

cardboard

Compliant with standards:

PN-EN 14073-2:2006

Boards density:

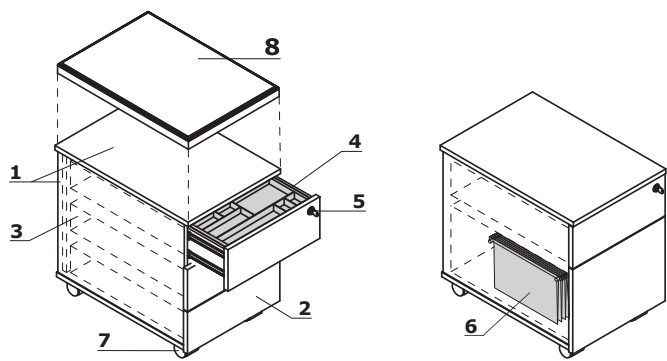
12 mm – 690 – 750 kg/m³

18 mm – 650 – 690 kg/m³

28 mm – 610 – 630 kg/m³

36 mm – 610 – 630 kg/m³

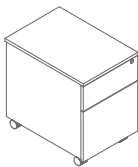
Mobile pedestal without handles



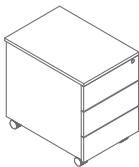
- 1. **Body** - MFC 18 mm, ABS edge
- 2. **Front** - MFC 18 mm, ABS edge
- 3. **Metal drawer** - roll runners, max load 25 kg, 80% extraction, anti-tilt mechanism; OPTION WITH EXTRA CHARGE - ball runners, soft-closing system
- 4. **Pencil tray** - plastic, colour: black
- 5. **Central lock** - foldable key
- 6. **Suspension files drawer** - ball runners, max load 30 kg, 100% extraction, A4 folders must be inserted parallel to the front
- 7. **Castors** - Ø50 mm, two with brakes
- 8. **Optional cushion SKP13** - for pedestal, max load 120 kg, ordered separately

ATTENTION - sitting on the pedestal possible only after mounting the cushion (SKP13); the pedestal with cushion is intended for sitting only
- moving the pedestal while sitting may result in damaging the castors

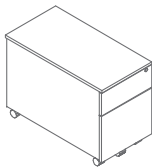
Mobile pedestal without handles *



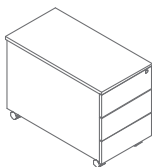
SLD12
416 / 600 / 586
23 kg



SLD120
416 / 800 / 586
23 kg

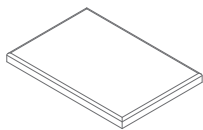


SLD13
416 / 600 / 586
23 kg



SLD130
416 / 800 / 587
35 kg

Pedestal cushion *



SKP13
400 / 600 / 52
3 kg

* dimensions expressed in millimeters: width x depth x height

Mobile pedestal without handles



26 Aluminum
satinato



67 White pastel



154 Anthracite



08 Black

SKP13

Fabric Nemo



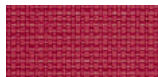
NE-1 Beige



NE-2 Yellow



NE-3 Orange



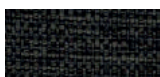
NE-5 Red



NE-9 Green



NE-10 Grey



NE-14 Graphite



NE-15 Navy blue



NE-16 Black



NE-17 Blue

Technical data:

Material	polyester 100%
Fabric weight	366g/m2
Abrasion resistance rubs	PN_EN ISO 12947 - 2:2 100,000
Pilling resistance	scale 1-8, max. 8, PN-EN ISO 105 - B02 (3-4)
Colour fastness to light	scale 1-5, max. 5, PN-EN 1021 - 2,
Colour fastness to rubbing	PN-EN 1021 - 1 skale 1-5, max. 5, EN ISO 105x12 (wet/dry) 4-5

Fabric Runner - second price group



R-63034 Orange



R-64089 Red



R-66063 Blue



R-60011 Grey



R-68056 Green



R-66064 Navy
Blue



R-60999 Black



R-60025
Graphite



R-61128 Beige

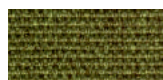


R-61130 Brown

Technical data:

Material	polyester 100%
Fabric weight	510 g/lm (16.45 oz./lin.yd.)
Abrasion resistance rubs	BS EN ISO 12947-2 70,000 Martindale cycles
Pilling resistance	scale 1-5, max 5, EN ISO 12945-2 (4-5)
Colour fastness to light	scale 1-8, max 8, EN ISO 105-B02 (5-7)
Colour fastness to rubbing	scale 1-5, max 5, EN ISO 105x12 (wet/dry) 4-5
Acoustic test sound absorption	ISO 354
Flammability	BS EN 1021-2 Match, CA TB 117-2013, BS EN 1021-1 (cigarette) Class Uno UNI 9175 Class 2, EMME

Fabric Medley – second price group



M-68005 Dark olive



M-66008 Grey



M-64019 Red



M-63064 Pink



M-60999 Black



M-61189 Beige



M-60003 Light grey



M-62054 Mustard



M-62002 Yellow



M-66010 Blue



M-65011 Grey-violet



M-63017 Rusty



M-67006 Light blue

Technical data:

Material	polyester 100%
Fabric weight	510 g/lm (16.45 oz/lin.yd.)
Abrasion resistance rubs	BS EN ISO 12947-2, 75,000 cykli Martindale
Pilling resistance	scale 1-5, max. 5, EN ISO 12945-2 (4)
Colour fastness to light	scale 1-8, max. 8, EN ISO 105-B02 (5-7)
Colour fastness to rubbing	scale 1-5, max. 5, EN ISO 105x12 (wet/dry (4-5/4-5))
Acoustic test sound absorption	ISO 354
Flammability	BS EN 1021-1 (cigarette) BS 476 Part 7, Class 2 Class Uno UNI 9174 - UNI 8457 CA TB 117-2013 ASTM E 84 Class I

Fabric Atlantic * – second price group



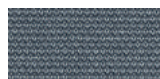
A-67043 Dark turquoise



A-67030 Aquamarine



A-60141 Light grey



A-60011 Grey



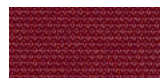
A-66064 Navy blue



A-65037 Violet



A-62048 Olive



A-64089 Red



A-61078 Beige



A-60025 Graphite

Technical data:

Material	polyester 100%
Fabric weight	530 g/lm (17.09 oz/lin.yd.)
Abrasion resistance rubs	BS EN ISO 12947-2, 110,000 Martindale cycles
Pilling resistance	scale 1-5, max. 5, EN ISO 12945-2 (4-5)
Colour fastness to light	scale 1-8, max. 8, EN ISO 105-B02 (5-7)
Colour fastness to rubbing	scale 1-5, max. 5, EN ISO 105x12 (wet/dry)
Flammability	CA TB 117-2013 ASTM E 84 Class I BS EN 1021-2 (match) BS EN 1021-1 (cigarette)

Fabric Vita – second price group



V-01 Light grey



V-02 Beige



V-03 Yellow



V-04 Grey



V-07 Dark grey



V-09 Olive



V-10 Grey-brown



V-11 Rusty



V-12 Black



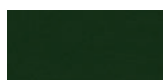
V-13 Chocolate



V-18 Aquamarine



V-19 Blue



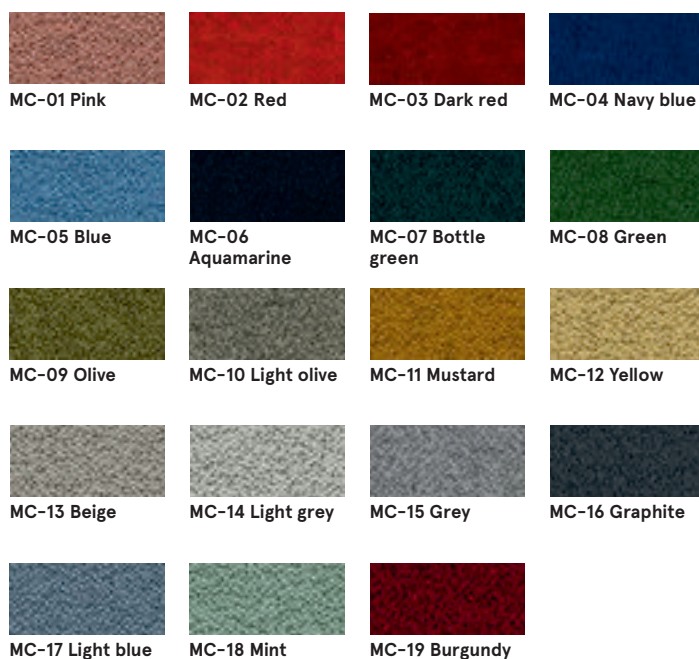
V-29 Dark green

Technical data:

Material	Surface: 98,5% PVC, 1,5% PU Substrate: 50% poliester, 50% Cotton
Fabric weight	850g/m2 ± 10% (1190G/lin. m ± 10%)
Abrasion resistance rubs	BS EN ISO 5470-2, 100,000 Martindale cycles
Colour fastness to light	6 (ISO 105 - B02)
Colour fastness to rubbing	wet: 4, dry: 4 (ISO 105 - X12)
Flammability	BS EN 1021 - (cigarette) BS EN 1021 - 2 (match) BS 5852 - (Ignition Source 5) BS 7176 - (Medium Hazard)
Flexes	BS EN ISO 7854 - Method B, 400.000 Flexing cycles
Anti-microbial / Anti-fungal	AATCC 147

* There is a possibility of ordering the product in full colour spectrum of Atlantic range, as per Gabriel's pattern book, within 8 weeks

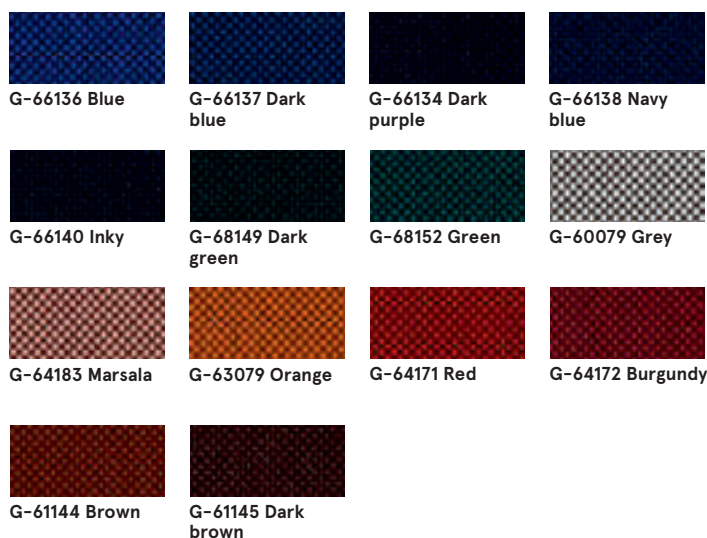
Fabric Mica – second price group



Technical data:

Material	post-consumer recycled polyester 97%, polyester 3%
Fabric weight	305 g/lm
Abrasion resistance rubs	60,000 rubs martindale (EN ISO 12947-2)
Pilling resistance	scale 1-5, max. 5 - EN ISO 12945-2, 4-5
Light fastness	scale 1-8, max. 8 - EN ISO 105-B02, 5-8
Rubbing fastness	dry: 4-5, wet: 4-5, scale 1-5, max. 5 - EN ISO 105x12
Flammability	CA TB 117-2013 ASTM E 84 Class I BS EN 1021-1 Cigarette BS EN 1021-2 Match BS 476 Part 7 class I

Fabric Go Check – second price group



Technical data:

Material	100% Trevira CS
Fabric weight	435g/lm
Abrasion resistance rubs	80,000 rubs martindale (EN ISO 12947-2)
Pilling resistance	scale 1-5, max. 5 - EN ISO 12945-2, 5
Light fastness	scale 1-8, max. 8 - EN ISO 105-B02, 5-8
Rubbing fastness	dry: 4-5, wet: 4-5, scale 1-5, max. 5 - EN ISO 105x12
Flammability	BS EN 1021 1&2 Cigarette and Match BS EN 1021-1 Cigarette BS 5852 Crib 5 BS 7176 Medium hazard DIN 4102 - B1 NFP 92-503/504/505 M1 ÖNORM A3800-B1-B3825-Q1 UK Class Uno UNI 9175 Class 1 I EMME FAR/JAR 25.853 (a) (i) (ii) CA TB 117-2013 DIN EN 13501-1 B-s1,d0 AM 18 - NF D 60-013-(only for fabric)

Fabric Charles – second price group



Technical data:

Material	100% polyester
Fabric weight	433g/m2
Abrasion resistance rubs	90,000 Martindale cycles (EN ISO 12947-2)
Pilling resistance	EN ISO 12945-2, 5
Light fastness	EN ISO 105-B02, 5
Rubbing fastness	dry: 4-5, wet: 4-5, EN ISO 105x12
Flammability	EN 1021, 1

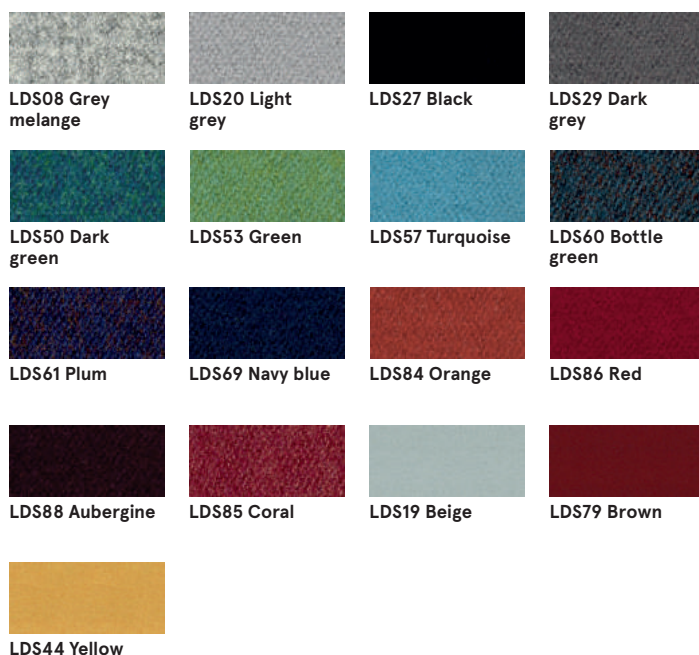
Fabric Xtreme – third price group



Technical data:

Material	100% Trevira Clame (CS) 100% Recycling (YS) Flame Retardant polyester. Non metallic dyestuffs.
Fabric weight	310 g/m2 ±5% (435g/lin.m ±5%)
Abrasion resistance rubs	60,000 Martindale cycles (CS) 100,000 Martindale cycles (YS)
Colour fastness to light	6 (ISO 105 - B02)
Colour fastness to rubbing	wet: 4, dry: 4 (ISO 105 - X12)
Flammability	EN 1021 - 1 (cigarette), EN 1021 - 2 (match) BS 7176 Low Hazard, NF P92-507 M1, DIN 4102 B1, UNI 9175 Class 1 IM, UNI 8456, UNI 9174 & UNI 9177 Classe Uno, ÖNORM B 3825 & A 3800-1 NF D 60-013

Fabric Synergy – third price group



Technical data:

Material	95% Virgin Wool, 5% Poliamid
Fabric weight	400g/m2 ±5% (560 g/lin.m ±5%)
Abrasion resistance rubs	Independently certified ≥100,000 Martindale cycles
Colour fastness to light	5 (ISO 105 - B02)
Colour fastness to rubbing	ISO 105 - X12 - wet: 4, dry: 4
Flammability	EN 1021 - 1 (cigarette), EN 1021 - 2 (match), BS 7176 Low Hazard, UNI 9175 Classe 1 IM, ÖNORM B 3825 & A 3800-1

Fabric Silvertex – third price group

There is a possibility of ordering the product in full colour spectrum of Silvertex range, as per Spradling's pattern book, within 15 working days.

Technical data:

Material	Topcoat: 100% Vinyl Backing: 100% Polyesterr Hi-Loft™
Fabric weight	685 gr/m2
Abrasion resistance	>300,000 cycles Martindale
UV-resistance	>= 7 (1000 hours, blue wool scale)
Cold Crack resistance	-23°C
Flame retardancy	NF P 92-503 / M2 EN 1021, Part 1&2 DIN 4102 B2 ÖNORM B 3825, Gruppe I – Schwerbrennbares Verhalten ÖNORM A 3800, Teil I, Qualmbildungsklasse QI – schwachqualmend IMO Res. MSC.307 (88) (2010 FTP Code) Annex I Part 8 (MED) Marine Equipment Directive in its current valid version UNI 9175 (1987) / UNI 9175/FAI (1994) Classe I.IM (uno I EMME) UNE 23.727-90 IR /M2 EN 71-2: 2006+AI: 2007 Safety of Toys – Part 2: Flammability ECE R 118 (replaces Directive 95/28/EC) FMVSS 302 FAR 25/853
Antimicrobial	Antifungal Protection, Antibacterial Protection, Antimycotic Protection

Fabric Atlas – fourth price group

			
AS-531 Orange	AS-501 Pink	AS-651 Red	AS-681 Burgundy
			
AS-391 Brown	AS-781 Navy blue	AS-161 Dark grey	AS-111 Light grey
			
AS-971 Light green	AS-981 Dark green		

Technical data:

Material	90% new wool, 10% nylon
Fabric weight	286g/m2, 400g/lm
Abrasion resistance rubs	100,000 cykli Martindale, EN ISO 12947
Colour fastness to light	ISO 105 B02: 6-7
Colour fastness to rubbing	ISO 105-X12:2001, (wet/dry) 4-5/4-5
Flammability	BS EN 1021-2 Match, BS EN 1021-1 Cigarette, BS 5 5852 Crib 5, BS 5852 ignition source 3, BS 5852 Part 1, NF D 60 013, UNI 9175 1IM, US Cal. Bull. 117-2013

Fabric Field2 – fourth price group

			
FD-463 Yellow	FD-963 Green	FD-123 Beige	FD-132 Grey
			
FD-142 Graphite	FD-662 Red	FD-673 Blue-red	FD-782 Navy blue
			
FD-693 Burgundy	FD-192 Black		

Technical data:

Material	100% Trevira CS
Fabric weight	321g/m2, 450g/lm
Abrasion resistance rubs	100,000 cykli Martindale, EN ISO 12947
Colour fastness to light	ISO 105 B02: 5-7
Flammability	BS EN 1021-2 Match, BS EN 1021-1 Cigarette, BS 5 5852 Crib 5, DIN 4102 B1 FAR 25.853, UNI 9177 classe 1, US Cal. Bull. 117-2013

Omega Ekspress SIA

LV40003402577

Biroja adrese: Lāčplēša 125, LV-1003, Rīga

www.city-office.lv

info@city-office.lv

Pedestals SLD Standard	Date of preparation 21.10.2021	The data contained in this document is valid in the day of its preparation. Change of the product, as long as it does not affect the basic features of it, does not require consistent updates of the document.	page 9/9
			colours